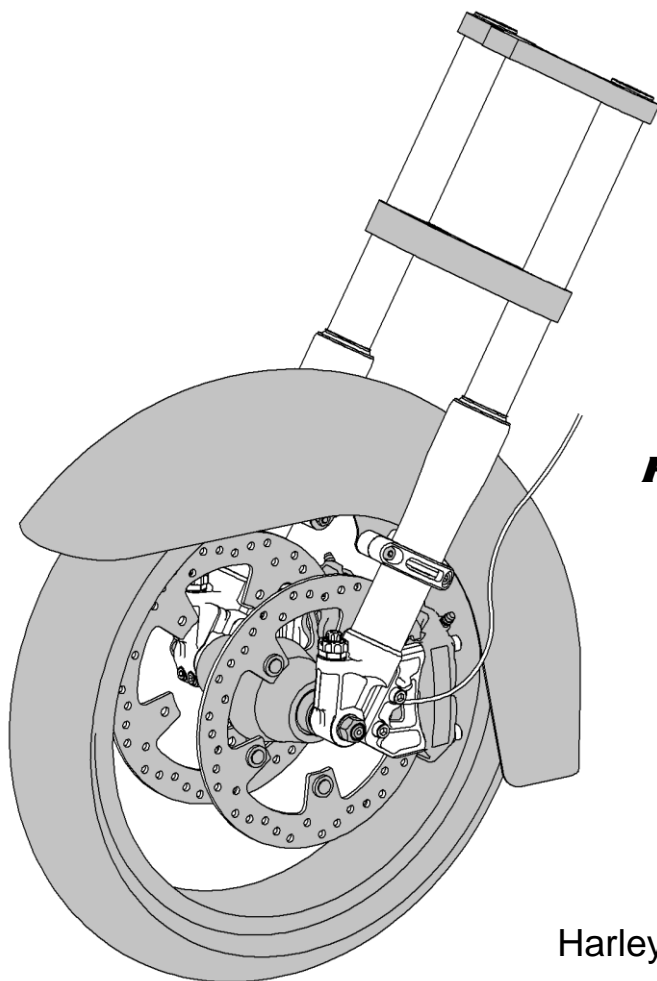


HYPHERPRO

Suspension Technology



H49 Front Fork

Installation manual

Harley Davidson Touring
2015-2019 (49mm fork)

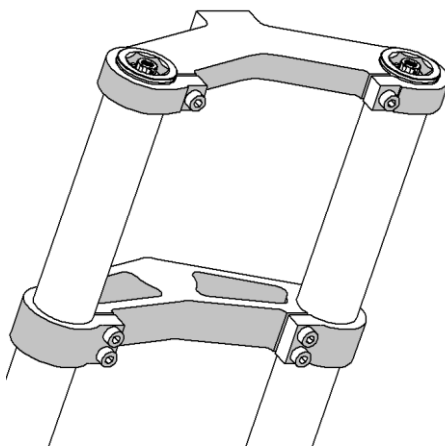
Electra Glide/ Road Glide/ Road King/ Street Glide

For removal and fitment of original parts, please refer to your motorcycle's service manual.

1

Make sure the bike is secure and lift the front.

Remove the front fender, brake calipers and front wheel according to your vehicles workshop manual. Remove the necessary covers and bodywork. Loosen the triple clamp bolts and remove the original fork legs from the bike.



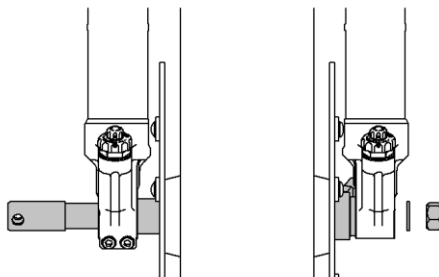
2

Insert the Hyperpro fork legs into the triple clamps. Align the edge of the fork tube with the top of the upper triple clamp and tighten all the clamp bolts.

3

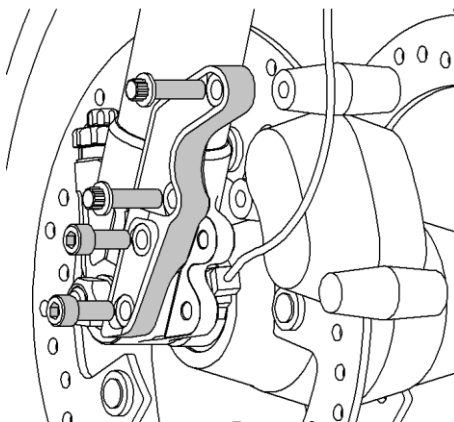
Mount the front wheel, front axle, axle washer and axle nut according to your vehicles workshop manual.

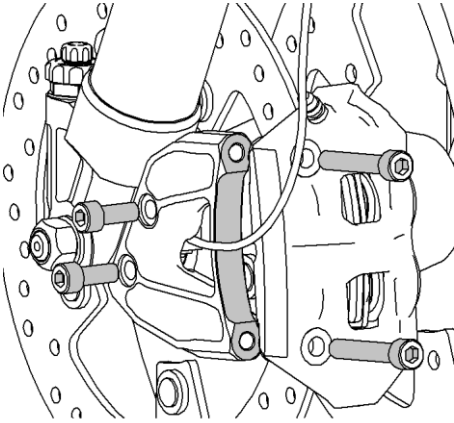
Before fully tightening, check the position of the ABS sensor (see picture 4a). After assembly has completed, loosen the axle clamp bolts, push down on the forks firmly at least 5 times and re-tighten the clamp bolts. 4



4a - OEM calipers:

Mount the brake adapter(s) to the fork legs, use the supplied bolts. Mount the brake calipers according to your vehicles service manual, using the original bolts.





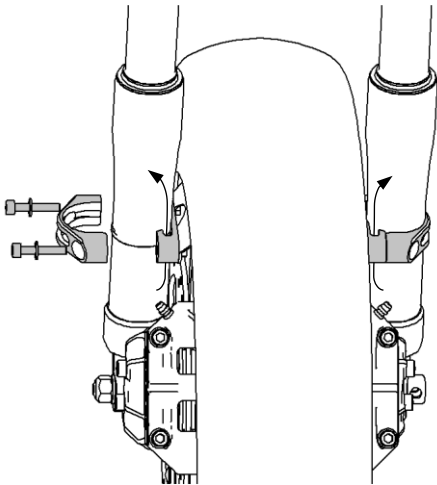
4b - Radial calipers:

Loosen the ABS sensor cable at the connector under the tank. Guide the cable through the left brake adapter (see picture) and mount the brake adapter(s) to the fork legs, use the supplied bolts. Mount the brake calipers to the adapters. Add caliper spacers for oversize disc(s).

Add shims behind the brake adapter where necessary to improve alignment of the caliper to the disc.

5

Check the routing of the ABS cable. Use zip ties to mount the cable away from moving parts (e.g. to the brake line).



6

Assemble the fender brackets around the fork legs and install the fender to the fender brackets using the original bolts and washers.

It is possible to use the inner brackets as a cable guide for the ABS cable and/ or aftermarket brake lines (see arrows).

Torque settings

[Nm]

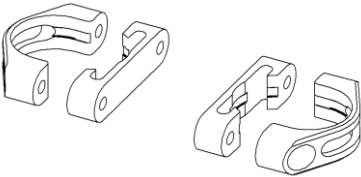
Upper triple clamp bolt	19*
Lower triple clamp bolt	15*
Fender bracket bolts	16-24*
Axle clamp bolts	18-20
Brake adapter bolts	38
Radial caliper bolts	38

*for OEM torque specs, please consult your motorcycle's service manual

Base settings

Fork Length	735 mm
Stroke	120 mm
Spring free length	364.5 mm
Spring number	1605
Preload spacer	70
Preload setting (0-15mm)	7.5mm (15 clicks)
Fork oil	GP5
Air chamber	150mm
Rebound	15 clicks open
Compression Low speed	15 clicks open
Compression High speed	15 clicks open

Accessories for Touring:



830-104-XX* Fender bracket set (L+R)



831-105-XX* Brake adapter OEM L

831-107-XX* Adapter Radial 100mm L

831-106-XX* Brake adapter OEM R

831-108-XX* Adapter Radial 100mm R

Each brake adapter comes with 2 bolts and 4 shims. Hyperpro brake adapters are designed for original 300mm discs. Spacers are available for radial calipers to suit larger discs.

*("XX" = color: "B0" = Black / "S0" = Silver)