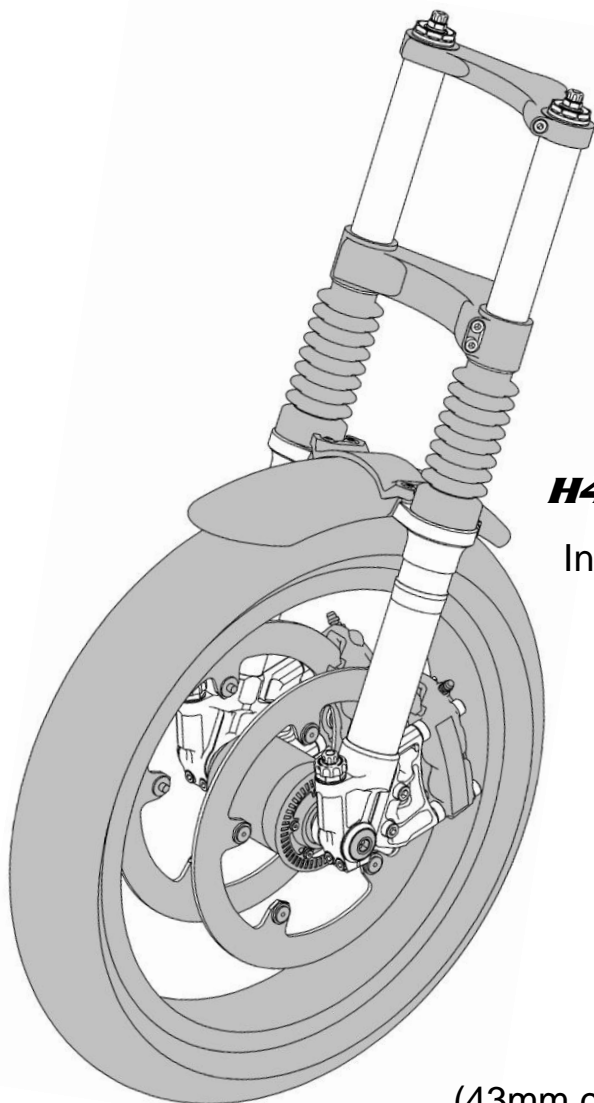


HYPERPRO

Suspension Technology



H43 Front Fork

Installation manual

BMW R nineT

(43mm conventional fork)

Pure/ Racer/ Scrambler/ Urban G/S

For removal and fitment of original parts, please refer to your motorcycle's service manual.

1

Make sure the bike is secure and lift the front.

Remove the front fender, brake calipers, ABS sensor and front wheel.

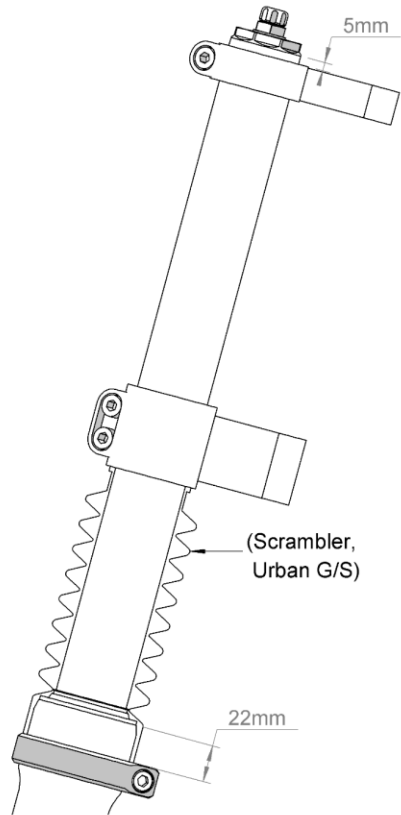
Loosen the triple clamp bolts and remove the original fork legs from the bike.

2

Mount the fender brackets to the Hyperpro fork legs, 22mm from the edge of the outer fork tube.

**optional for Scrambler, Urban G/S: mount the original fork boots.*

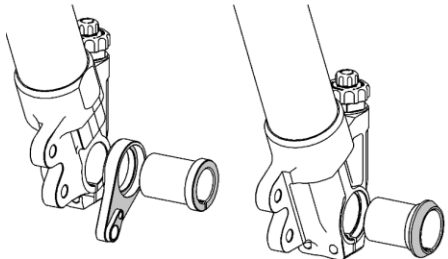
Insert the Hyperpro fork legs into the triple clamps. Set the edge of the fork tube 5mm above the upper triple clamp and tighten the clamp bolts.

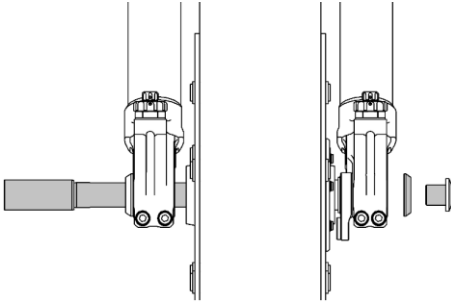


3

Mount the L axle spacer and ABS sensor bracket from the inside of the left fork leg axle hole.

Mount the R axle spacer from the outside of the right fork leg axle hole.



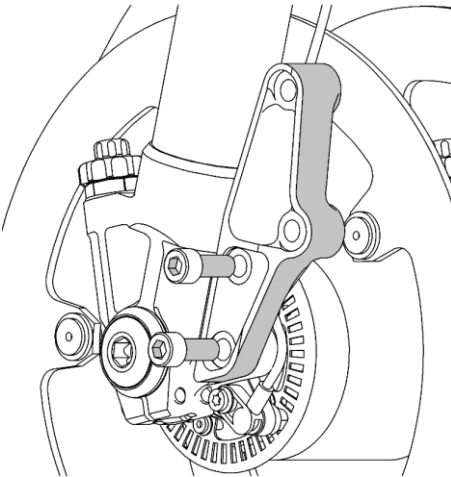


4

Mount the front wheel, front axle, axle washer and axle bolt.

Set the position of the ABS sensor bracket and tighten the axle bolt and left fork axle clamp bolts. Install the ABS sensor to the bracket, use the original bolt.

Push down on the forks firmly at least 5 times before tightening the right axle clamp bolts. (This is easier when the brakes are fitted.)



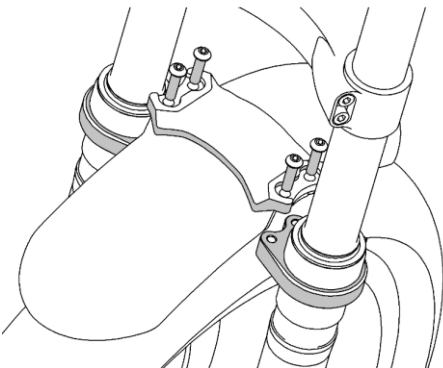
5

Mount the brake adapters to the fork legs, use the supplied bolts.

Mount the brake calipers to the adapters.

Add shims behind the brake adapter where necessary to improve alignment of the caliper to the disc.

Check the routing of the ABS cable. Use zip ties to mount the cable away from moving parts (e.g. to the brake line)



6

Install the fender to the fender brackets, using the original hardware. Adjust the angle of the fender brackets if necessary.

Torque settings

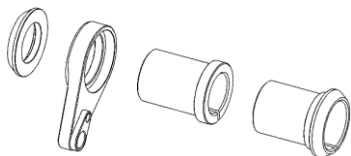
[Nm]

Upper triple clamp bolt	19*
Lower triple clamp bolt	15*
Fender bracket clamp bolts	15
Axle clamp bolts	18-20
Brake adapter bolts	38
Radial caliper bolts	38

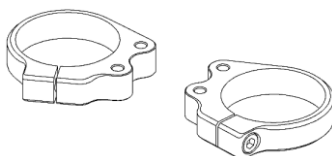
*for OEM torque specs, please consult your motorcycle's service manual

Base settings	Pure / Racer	Scrambler / Urban G/S
Fork Length	740 mm	770 mm
Stroke	120 mm	120 mm
Spring free length	392.5	422.5
Spring number		0835
Preload spacer		175
Preload setting (0-15mm)	7.5mm (15 clicks)	7.5mm (15 clicks)
Fork oil	GP5	GP5
Air chamber		
Rebound	15 clicks open	15 clicks open
Compression Low speed	15 clicks open	15 clicks open
Compression High speed	15 clicks open	15 clicks open

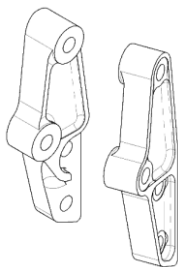
Accessories for R NineT:



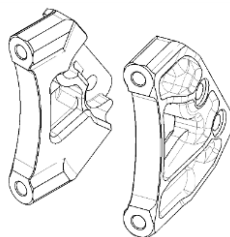
830-102-XX* Axle & ABS adapter set



830-103-XX* Fender Bracket set (L+R)



831-110-XX* Caliper adapter OEM L



831-111-XX* Caliper adapter OEM R

831-117-XX* Adapter Radial 100mm L

831-118-XX* Adapter Radial 100mm R

Each brake adapter comes with 2 bolts and 4 shims.

*("XX" = color: "B0" = Black / "S0" = Silver)